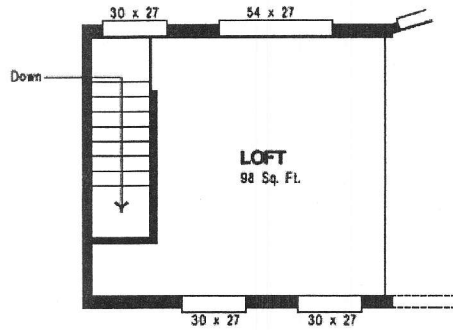
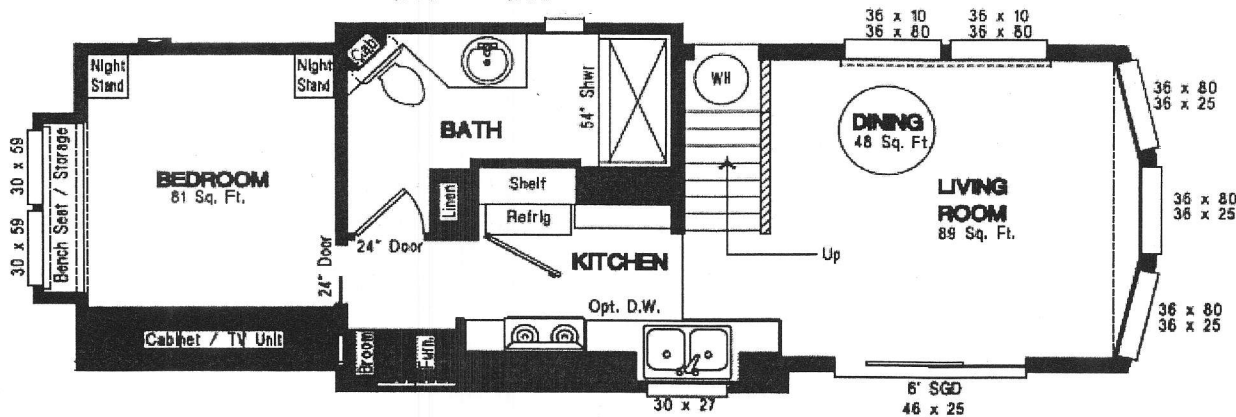
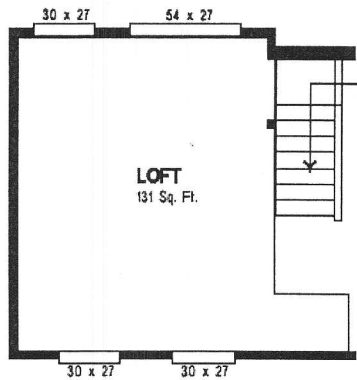
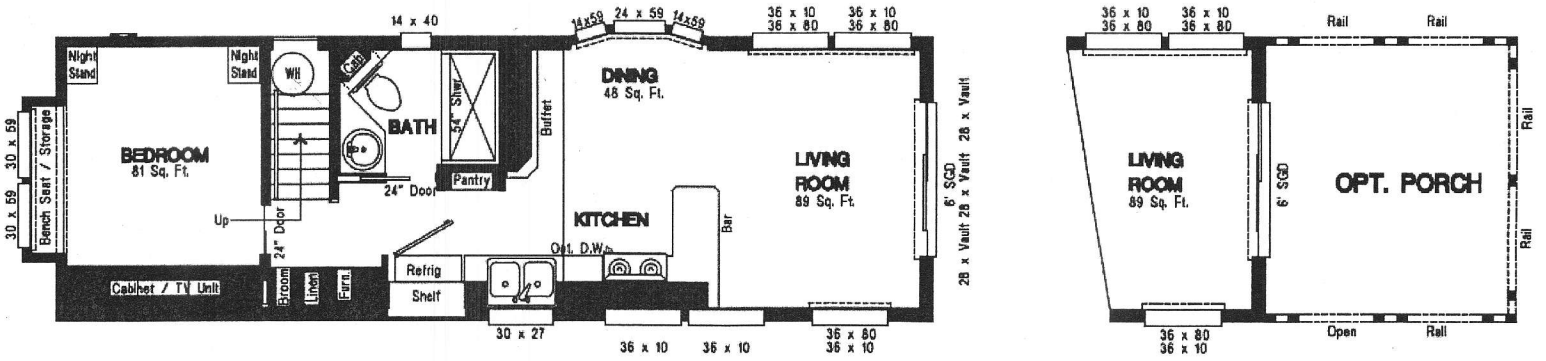


# LOFTED MODELS

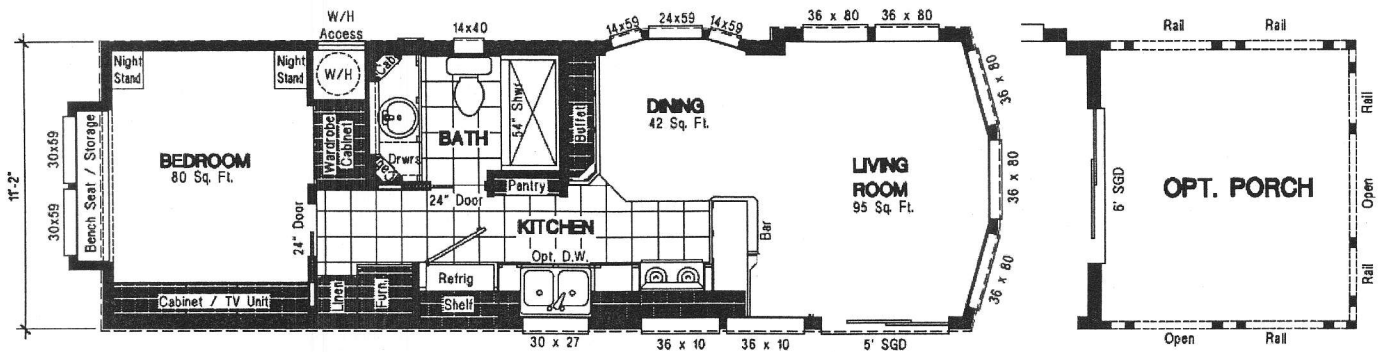


**Park Model PS-201M**  
399.4 SQ. FT.

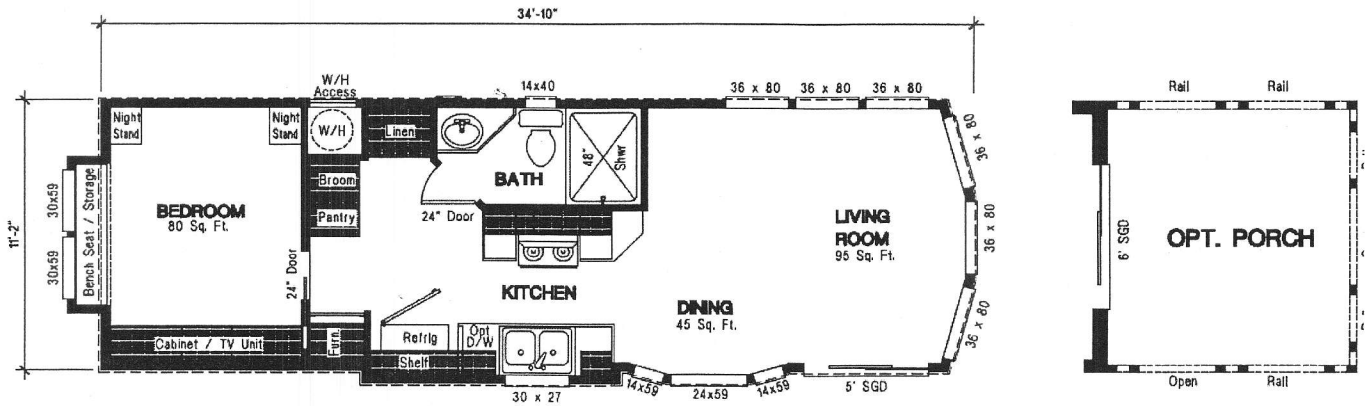
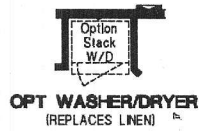


**Park Model PS-203M**  
399.6 SQ. FT.

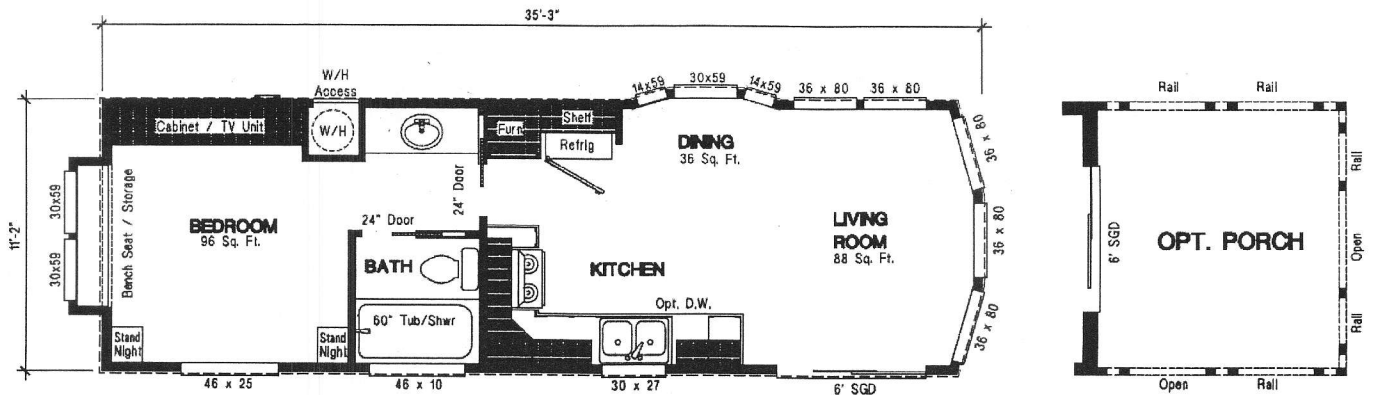
# NON LOFT MODELS



**Oakridge Series - Model PS-100M**  
 399 SQ. FT. (NIC BENCH SEAT)



**Oakridge Series - Model PS-101M**  
 400 SQ. FT. (NIC BENCH SEAT)



**Oakridge Series - Model PS-102M**  
 399 SQ. FT. (NIC BENCH SEAT)

# ***MODEL SPECIFICATIONS***

## **CONSTRUCTION FEATURES**

- 2x6 Floor Joists -16" O.C.
- 2x4 Exterior Walls -16" O.C.
- 25 Year Fiberglass Shingles
- 19/32" T&G Plywood Sub Flooring
- In-Floor Waste Plumbing
- Kiln Dried Framing Lumber
- 30# Roof Load
- True 5/12 Roof Pitch (non loft models)
- True 10/12 Roof Pitch (lofted models, loft area 2/12 pitch)
- 9' Flat Ceilings (non loft models)

## **EXTERIOR FEATURES**

- Cemplank Cement Lap Siding all Sides
- OSB Sub Sheathing All Exterior Walls
- Whole House Moisture Barrier Wrap
- 2x8 Rough Sawn Eave Fascia
- 36" Front Door or SGD (model specific)
- Continuous Eave Soffit Venting
- Ridge Style Roof Venting
- 4" LP Smart Window Trim
- Extended Eaves and Overhangs
- Exterior GFI Receptacle (1)
- Frost Proof Hose Bib (1)

## **ENERGY SAVING FEATURES**

- Low-E Vinyl Framed Windows
- R-30 Blown-In Ceiling Insulation
- R-11 Fiberglass Exterior Wall Insulation
- R-22 Fiberglass Floor Insulation

## **SAFETY & UTILITY FEATURES**

- All Natural Gas Appliances (LP convertible)
- 50 Amp Electrical Service
- 30 Gallon Electric Water Heater
- All Copper Wiring
- Smoke Alarms W/CO Detector
- Shut-Off Valves at Sinks and Toilets
- GFI Receptacle at all Wet Areas
- Porch Lights at each Exterior Entry
- Egress Windows in all Bedrooms
- Fire Extinguisher Located at front Door
- Whole House Shut Off Valve

## **INTERIOR FEATURES**

- Tape and Texture Drywall W/Rounded Corners
- Brocade Style Ceiling Drywall Finish
- Raised Panel Knotty Alder Cabinet Doors
- Laminated Flooring in Living Room & Kitchen
- Shaw Carpeting in Bedroom and Loft Area
- 5# Carpet Pad
- Luxury Vinyl Tile Bathroom floor
- Bedroom Ceiling Lights (Double Bulb)
- Metal Mini Blinds
- Laminated Counter Tops w/Splash
- Nickel Hardware Throughout
- Wired for Fan in Master Bed & Living Room
- Recessed Can Lights in Living & Loft Areas
- Rocker Style Light Switches
- Ceramic Tile W/Accent Tiles Kitchen/Bath Splas
- Baseboard Molding Throughout
- Valance Drapery Treatment Throughout
- Knotty Alder Pocket Doors

## **KITCHEN FEATURES**

- General Electric 18 cu ft Refrigerator
- General Electric Free Standing Gas Range
- Microwave Oven Over Range
- Stainless Steel Kitchen Sink
- Single Lever Faucet with Sprayer
- Maple Lined Cabinet Interiors
- Recessed Can Lights
- Drawer Over Door Cabinet Design
- Ball Bearing Drawer Guides

## **BATHROOM FEATURES**

- Adjustable Shower Heads
- China Bathroom Sinks
- Beveled Bathroom Mirrors
- Lavy and Recessed Ceiling Lighting
- Ceiling Exhaust Fans
- Elongated Toilet
- Towel Bar & Tissue Holders
- Fiber Glass Shower W/Single Lever Faucet

Do to our continuous improvement efforts we reserve the right to change standard features, prices, materials and specifications without notice or obligation.